

enco



COMPANY **PROFILE**

PT. ENCO TEHNIK INDONESIA



PROMOSI KESELAMATAN
DAN KESEHATAN KERJA



PT. ENCO TEHNIK INDONESIA

Mustika Media Residence Blok T1/3 RT.007 (Head Office)
Jalan Raya Bantar Gebang Setu RT.003 RW. 008 (Workshop)
Kelurahan Lubang Buaya Kecamatan Setu, Bekasi, Jawa Barat, 17320
Telepon. 08111031982
www.encoindo.co.id

ENCO



CERTIFICATE OF REGISTRATION



This is to certify that member name

PT. ENCO TEHNIK INDONESIA

Certificate No: QMS19290316

JL. MUSTIKA MEDIA RESIDENCE BLOK T1/3, RT 007 RW 018,
DESA LUBANG BUAYA, KEC. SITU, KAB. BEKASI 17320,
WEST JAVA, INDONESIA

Is successfully implementing

QUALITY MANAGEMENT SYSTEM

which complies with the requirements of

ISO 9001:2015

with following scope

Provision of Mechanical and Electrical Equipment, Welding Service, NDT Inspection
and Construction.

EA CODE : 29

Initial Assessment : 18 October 2019
Certification Date : 22 October 2019
Expiry Surveillance : 22 October 2020
Expiry Renewal : 22 October 2022
visit www.jsi-certification.com for certificate validation

Bernadette Linda
Certification Authority



JSI-CERTIFICATION



Registered by:
JSI-Certification and subject to the JSI Terms and Conditions
for Certification. This certificate remains the property of JSI-
Certification and must be returned to JSI-Certification upon its
request. To verify that this certificate is current please refer to
JSI-Certification online certification register at <http://www.jsi-certification.com>

THE NEW TECH CO

- 03 Organization Structure
- 04 About Us
- 05 Vision & Mission
- 06 Our Services
- 07 Welding Services
- 08 NDT Services
- 10 Construction Services
- 11 Work Facilities



Drs. Sofuan Salim
President Commisioner



Great honor thanks for all clients and relation, In this opportunity we would like to introduce our company PT. Enco Teknik Indonesia private company in the field of Construction and Services Engineering.

Our Vision is to become and excellent corporation in equipment services in Indonesia achieved through professional and suistainable growth.

We service foward international standars, valuable experience, and intregated approach to provide professional and exellent performance and become the best industry field.

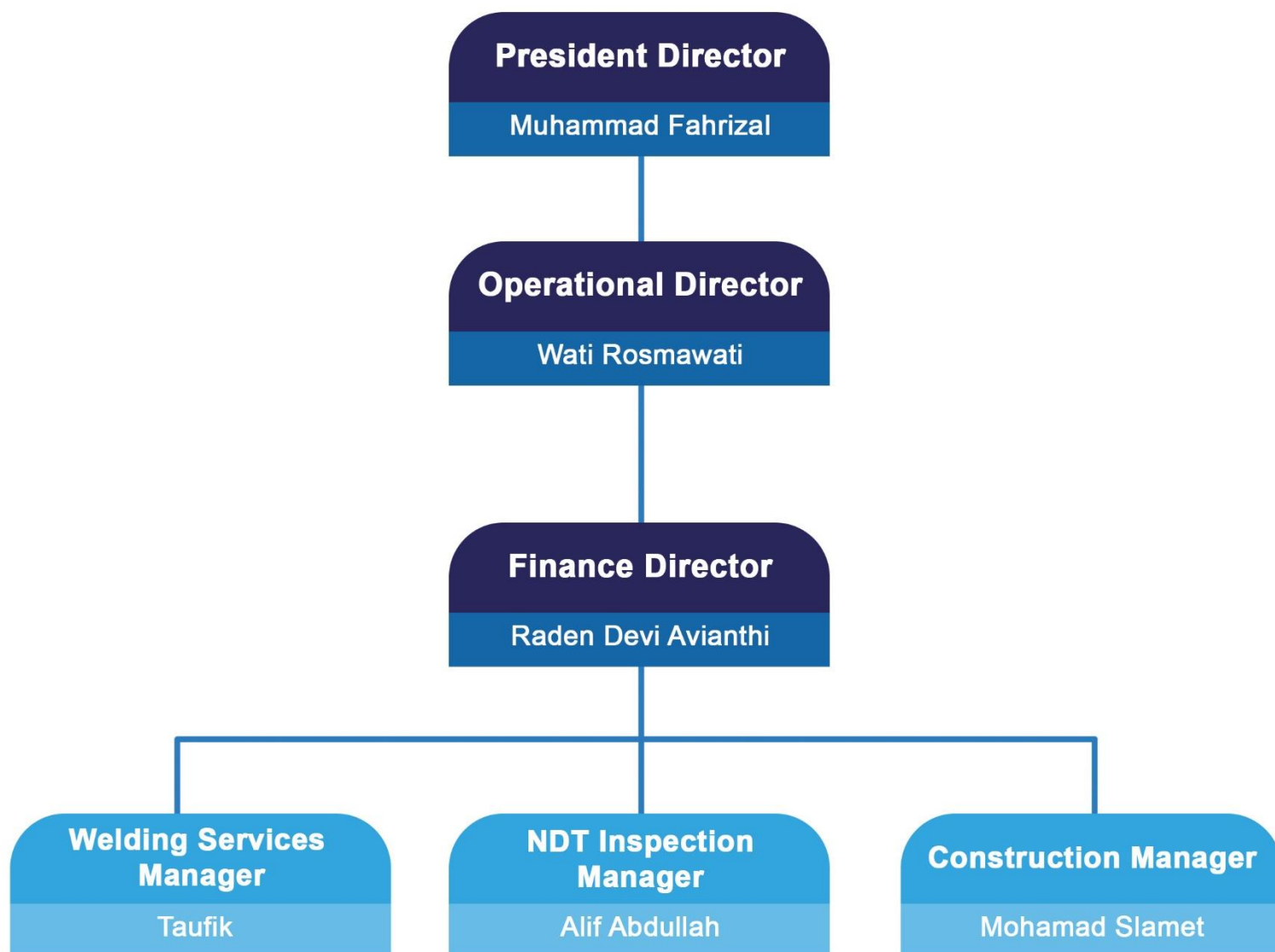
EDUCATION

Universitas Indonesia
Fakultas Ilmu Pasti dan Ilmu Alam Farmasi

JOB EXPERIENCES

1. Zambon SpA (Farmasi Italy, 1976 - 1982) as Promotion Manager
2. Astra Group
 - PT Astra Inti (1982 - 1984) as Departement Manager
 - PT Astra Daihatsu Motor (1984 - 1995) as General Manager HRD
 - PT Gaya Motor (1995 - 1997) as General Manager HRD
3. Bakrie Land Development Tbk (1997 - 1999) as Vice President Human Resources
4. PT. Truba Jurong Engineering (1999 - 2003) as Vice President Human Resources
5. PT. Optimal Solution as Chairman
6. Laduni Training Center as Lecturer

ORGANIZATION STRUCTURE



Bekasi, June 2018

Director PT. Enco Teknik Indonesia


PT. ENCO TEHNIK INDONESIA
M. Fahrizal
President Director

ABOUT OUR COMPANY



ENCO TEHNIK INDONESIA

Enco Teknik Indonesia, PT was established in 2015 in Bekasi, West Java Province Indonesia as private company in the field of Construction and Services Engineering We specialize in services for Construction Equipment, Rotating Equipment, and Storage Equipment.

We create reliable and sustainable solutions for the oil and gas, power, water, and other markets.

VISION & MISSION

VISION

Become and excellent corporation in equipment services in Indonesia achieved through professional and sustainable growth.

MISSION

Focus in profitable business in energy and construction with a Taqwa Foundation



OUR SERVICES

WELDING SERVICES

1. Welding Procedure Specification
2. Welder Labour Supply
3. On Site Welding
4. Welding Repair
5. GMAW, FCAW, GTAW, SAW, SMAW, and Laser Welding

NDT INSPECTION

1. Ultrasonic Testing
2. Magnetic Testing
3. Radiography Testing
4. Phased Array Ultrasonic Testing

CONSTRUCTION

1. Structure
2. Overhead Crane
3. Gantry
4. Jip Crane
5. Cargo Lift



WELDING SERVICES

Based restore performance your equipment with our welding procedure in the welding turbine industry is one of the methods and weld repair was chosen as the most cost effective alternative

BEARING SERVICES

Enco repairs bearings (fluid/film) by using babbitt / white metal replacement to extend the lifetime of your main equipment. We offer high quality services with fast turnaround time to help your equipment get back to work quality

We can supply any space or replacement steam turbin part including :

- Rotors
- Bearings
- Strators
- Casings

JOURNAL TURBIN REPAIR

Enco repairs turbine journal services were performed using two methods :

1. Using laser welding and SAW welding.
2. Procedures are designed to suit your requirements and are carried out by our highly skilled and well trained welders





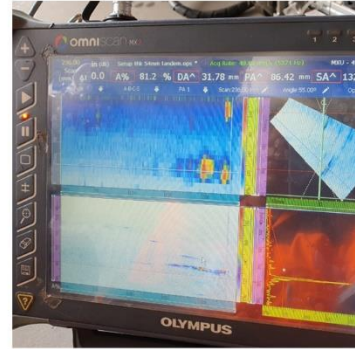
NON DESTRUCTIVE TEST (NDT) SERVICES

WHAT IS NDT?

Non-destructive testing (NDT) is a testing and analysis technique used by industry to evaluate the properties of a material, component, structure or system for characteristic differences or welding defects and discontinuities without causing damage to the original part. NDT also known a non-destructive examination (NDE), non-destructive inspection (NDI) and non-destructive evaluation (NDE).



ULTRASONIC TESTING



Manual ultrasonic testing (UT) is one of the more common non-destructive testing methods performed on materials. This testing utilises high frequency mechanical energy, i.e. high frequency sound waves, to conduct examinations and measurements on a test area.

MAGNETIC PARTICLE EXAMINATION



This NDT process uses magnetic fields to find discontinuities at or near the surface of ferromagnetic materials. The magnetic field can be created with a permanent magnet or an electromagnet, which requires a current to be applied.

RADIOGRAPHY INTERPRETATION



Radiographic Testing (RT) is a non-destructive testing (NDT) method which uses either x-rays or gamma rays to examine the internal structure of manufactured-components identifying any flaws or defects.



CONSTRUCTION SERVICES

Enco helps major all manufacturing and maintain their demanding production schedules for lifting and handling material.

We provide a full complement of cranes, material handling equipment and service for the process of building crane

Structural steel is steel construction material wich fabricated with a spesific shape and chemical composition to suit a project's applicable spesification

Depending on each project's applicable spesifications, the steel se tions might have various shapes, sizes and gauges made by hot or cold rolling, others are made by welding together flat or bent plates. Common shapes include the I - Beam, HSS, Channels, Angles and Plate



WORKING FACILITIES





JOB EXPERIENCE

| No. | Experience | End User |
|-----|--|---|
| 1. | Welding Repair & Machining Impeller | PT. Turbo Daya Mekanika |
| 2. | Arm Clamper | PT. Toyota Motor Manufacturing Indonesia |
| 3. | Slider Dies | PT. Toyota Motor Manufacturing Indonesia |
| 4. | Part Simulasi Karakuri | PT. Toyota Motor Manufacturing Indonesia |
| 5. | Guide Rail | PT. Toyota Motor Manufacturing Indonesia |
| 6. | Welding Repair Diaphragm | PLTP Ulumbu |
| 7. | Welding Repair Diaphragm | PT. Indonesia Power UPJP Kamojang |
| 8. | Welding Repair Diaphragm Steam Chamber | PLTP Gunung Salak Indonesia Power |
| 9. | Welding Repair Nozzle | PT. Pupuk Kaltim |
| 10. | Welding Repair Nozzle | PT. Petro Kimia Gresik |
| 11. | Welding Repair Diaphragm & Nozzle | PT. Pupuk Sriwijaya |
| 12. | Supervisi & Inpeksi sBarch Bridge Project - Jembatan Tol Becakayu Fabricator PT. Bakrie Metal Industries - Jembatan Tol Surabaya Mojokerto Fabricator PT. Bakrie Construction Cilegon - Jembatan Tol Ahmad Yani Bekasi Fabricator PT. Guna Nusa Fabricator | PT. Waskita / PT. KKDM PT. Waskita / Waskita Bumi Wira |
| 13. | Inspeksi Pipe Line | PLTM Kunci Hydro Semarang |

OUR CLIENT

IKI Ohgishi Indonesia

PJB SERVICES

mulia
Jaya Mandiri

FICS

JPA
PT. JAVA PRATAMA ENERGI

PT. MANNEL MITRA JAYA

PT.DWIPA KONEKTRA
Electrical-Mechanical-Contractor and Trading

TOYOTA
INDONESIA
PT Toyota Motor Manufacturing Indonesia

TURBODM

METRIKON JAYA MANDIRI
KAROSERI - MEKANIKAL - ELEKTRIKAL - KONSTRUKSI

PUSRI
PUPUK UREA
PALEMBANG INDONESIA

nSBPrima
SBArch Bridge Design

PETROKIMIA GRESIK
Solusi Agroindustri

PT Geo Dipa Energi (Persero)

CIT
PT CIHANJUANG INTI TEHNIK

PLTM CIBUNI MANDIRI

LIMOV//

PLTMH
(Pembangkit Listrik Tenaga Mikro Hidro)

PLTM KUNCI PUTIH SEMARANG

WASKITA

PT. KEMENANGAN
Since 1954

PROJECT EXPERIENCE

FABRIKASI, NDT, & INSTALASI
ERECTION POWER HOUSE
PROJECT PLTM CIBUNI MANDIRI

2020



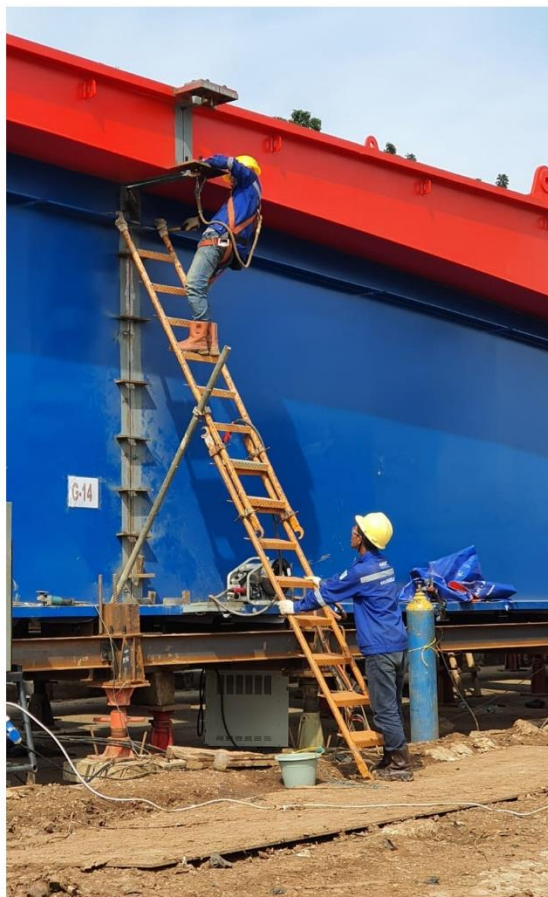
enco



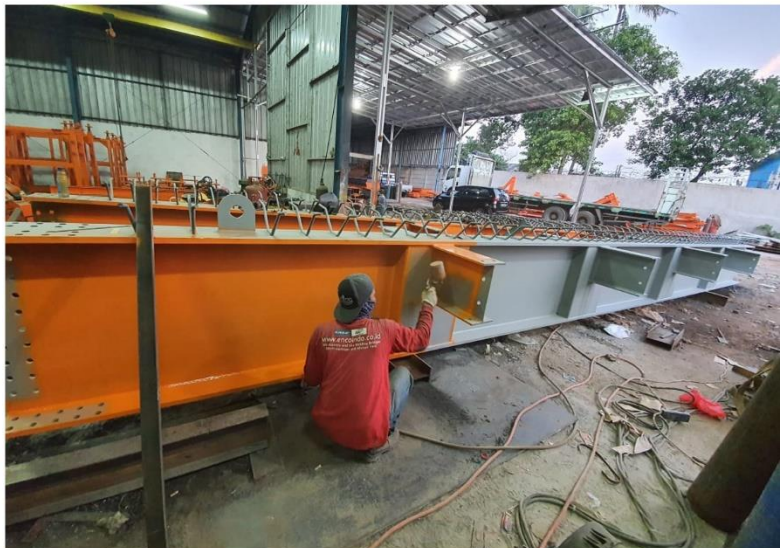
PROJECT EXPERIENCE

ERECTION JEMBATAN HASIBUAN

2020



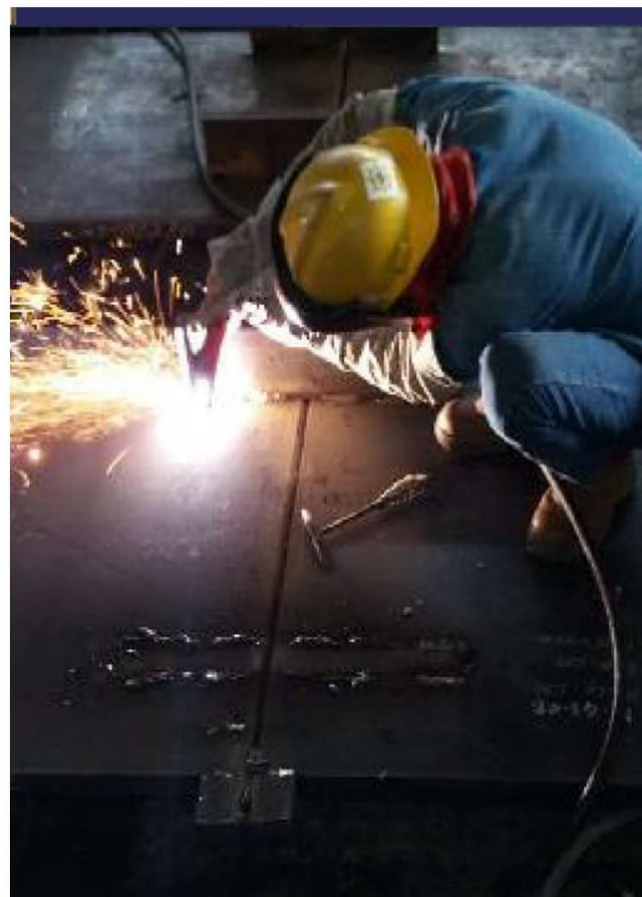
ENCO



PROJECT EXPERIENCE

SUPERVISION & INSPECTION
SBARCH ACHMAD YANI
HASIBUAN BRIDGE

2020





PROJECT EXPERIENCE

enco

2020

CONTACT US

Jl. Raya Setu Bantar Gebang RT 03
RW 08 Kel. Cijengkol, Setu, Bekasi

Telp. 0811 - 1031 - 982

www.encoindo.co.id

PT. ENCO TEHNIK INDONESIA

enco